

Mountain View jungle property bordered by a river

📍 Dominical, Puntarenas

\$140,000

ID: 09621

- Property Type: Land
- Size: 24376 sq m
- 6.02 Acres



- Status: Active/Published
- Jungle Views
- Sub Dividable
- Acreage
- Mountain Properties
- Valley Views
- Close To Schools
- Mountain View

Property Description

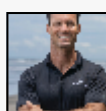
Kick back and enjoy the sounds of the jungle and running water from your private jungle property. Bordered by a year round creek this 6 acre farm provides you with a little of everything. Conveniently tucked away near a dead end road for privacy and borders both public road and river. With great mountain views you wont see another house in site yet know that you are part of a well knit community. With very gentle sloping land all the the property is usable and accessible. Farm it, plant it, build some cabins to rent or leave it in its natural state with walking trails to enjoy. If you are looking for an affordable property with water in a great well established community then look no further. Enjoy the cool nights and conveniences of not needing air conditioning as this property sits at a perfect elevation of 2,000 feet. Conveniently located 15 minutes to the city of San Isidro and 30 minutes to the beaches of Dominical.

Additional

- ID 09621
- Active/Published
- For Sale
- Land
- \$140,000
- View : Jungle

+506-4104-7055

50 Meters North of the Roca Verde
Hotel Dominical, Bahia Ballena,
Punteranas, Costa Rica 60504



REAL ESTATE AGENT

Dylan Park

Coldwell Banker Vesta Group Dominical

[US Toll Free: 713.292.0144](tel:713.292.0144)

[Costa Rica Direct: +506-4104-7055](tel:+506-4104-7055)



[Listing Details](#)