

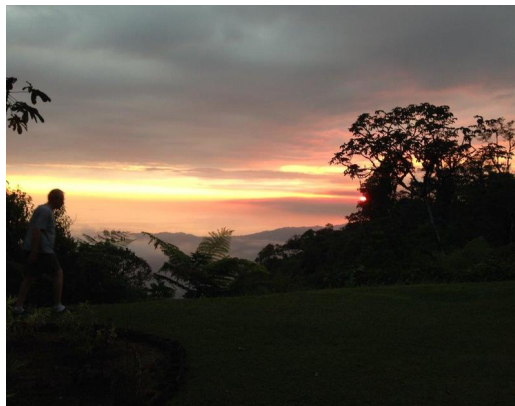
# 657 Acre Farm, Retreat, B&B or Playground with Ocean & Valley View

## \$1,475,000

ID: 06422

📍 Dominical, Puntarenas

• Property Type: Single Family Homes • Bedrooms: 3 • Built: 2000 • Size: 2658000 sq m • 656.82 Acres •  
Floor Area (SQFT): 1,991



- Status: Active/Published
- Internet
- Mountain Properties
- Valley Views
- Acreage
- Investment Opportunities
- Mountain View
- Parking Spaces
- Development Farm
- Jungle Views
- Ocean View

## Property Description

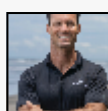
It would be hard to imagine a property with more versatility than these 657 acres offer. High on a mountain top, you have views all around, as well as both original forest and open areas to use for your creative purposes. Horses with equestrian trails? Mountain biking trails? Hiking trails? Micro communities sharing a desire for a more natural lifestyle? Camps? Retreats? Training centers? Orchards for pleasure and profit? Gardens and small animals? Conservation? You could do any of those, or almost all of them at once, and much more with the space available, all while enjoying supreme privacy and the full range of Costa Rica's biodiversity. If the idea of going off grid and experimenting with self sufficiency appeals to you, this is a place where you could make it work. It's not far from San Isidro or Dominical's beaches, but it's a world away in a cool, comfortable climate year around. Water and electricity are already on site for your convenience.

## Additional

- ID 06422
- Active/Published
- 3 Bedrooms
- For Sale
- Single Family Homes
- Parking Spaces : 2
- \$1,475,000
- 2.5 Bathrooms
- View : Ocean

**+506-4104-7055**

50 Meters North of the Roca Verde  
Hotel Dominical, Bahia Ballena,  
Punternas, Costa Rica 60504



REAL ESTATE AGENT

**Dylan Park**

Coldwell Banker Vesta Group Dominical

[US Toll Free: 713.292.0144](tel:713.292.0144)

[Costa Rica Direct: +506-4104-7055](tel:+506-4104-7055)



[Listing Details](#)