

Iconic Legacy Waterfall Property

\$495,000

ID: 18800

📍 Dominical, Puntarenas

- Property Type: Land
- Size: 35207 sq m
- 8.7 Acres



- Status: Active/Published
- Close To Transport
- Jungle Views
- Waterfall View
- Close To Schools
- Development Farm
- Mountain Properties
- Close To Shops
- Investment Opportunities
- Mountain View

Property Description

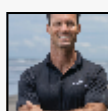
Experience the ultimate iconic legacy property, a true marquee listing. This one-of-a-kind property offers 8.73 very usable acres of pristine land, complete with crystal clear river frontage, ocean and sunset views, and direct front row views of the tallest waterfall in Costa Rica, the Diamante. Known for its magical properties, the headwaters begin just above the farm and flow a short distance to the Pacific Ocean. Mature fruit trees provide edible delights, and primary forest and mature landscaping give a lush surrounding attracting wildlife and vibrating with the sounds of the jungle. The property contains four natural building areas, two with front-row epic views of the waterfall and ocean/sunset views, and two with water fall views from a bit further back. It is located in the Diamante valley, close to Uvita, Dominical, and the city of San Isidro, bordering a 1000-acre nature preserve. Well-maintained access roads make it easy to get to the beach and prime surfing in just 35 min.

Additional

- ID 18800
- Active/Published
- For Sale
- Land
- \$495,000
- View : River

+506-4104-7055

50 Meters North of the Roca Verde
Hotel Dominical, Bahia Ballena,
Punternas, Costa Rica 60504



REAL ESTATE AGENT

Dylan Park

Coldwell Banker Vesta Group Dominical

[US Toll Free: 713.292.0144](tel:713.292.0144)

[Costa Rica Direct: +506-4104-7055](tel:+506-4104-7055)



[Listing Details](#)